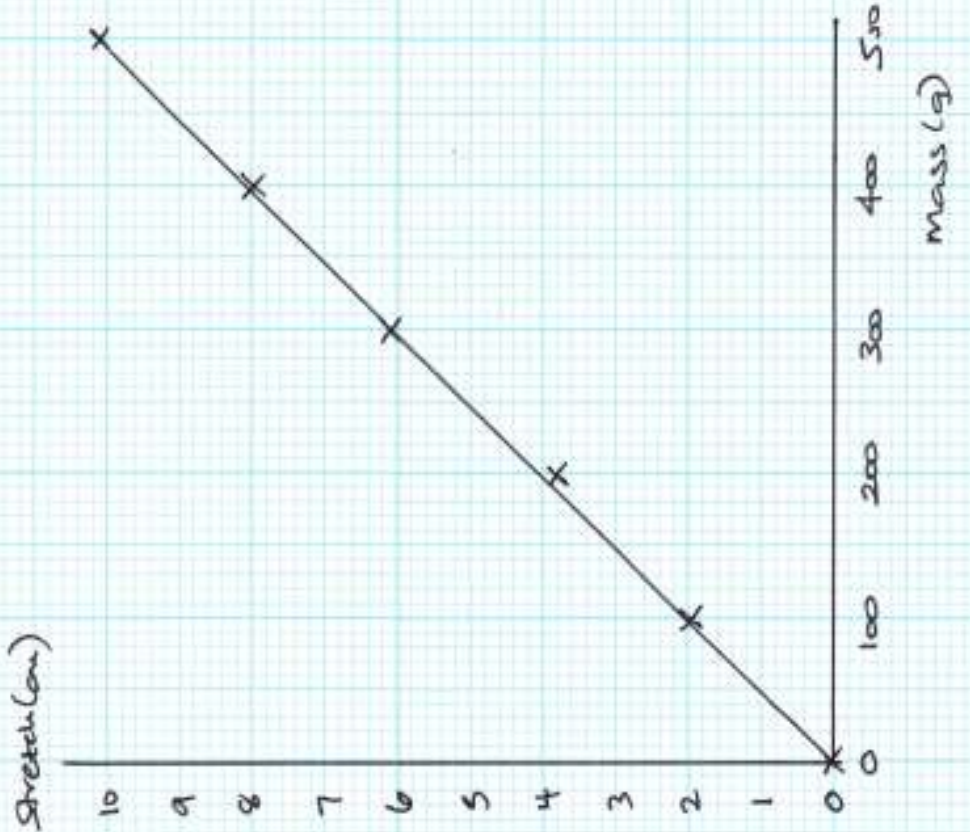


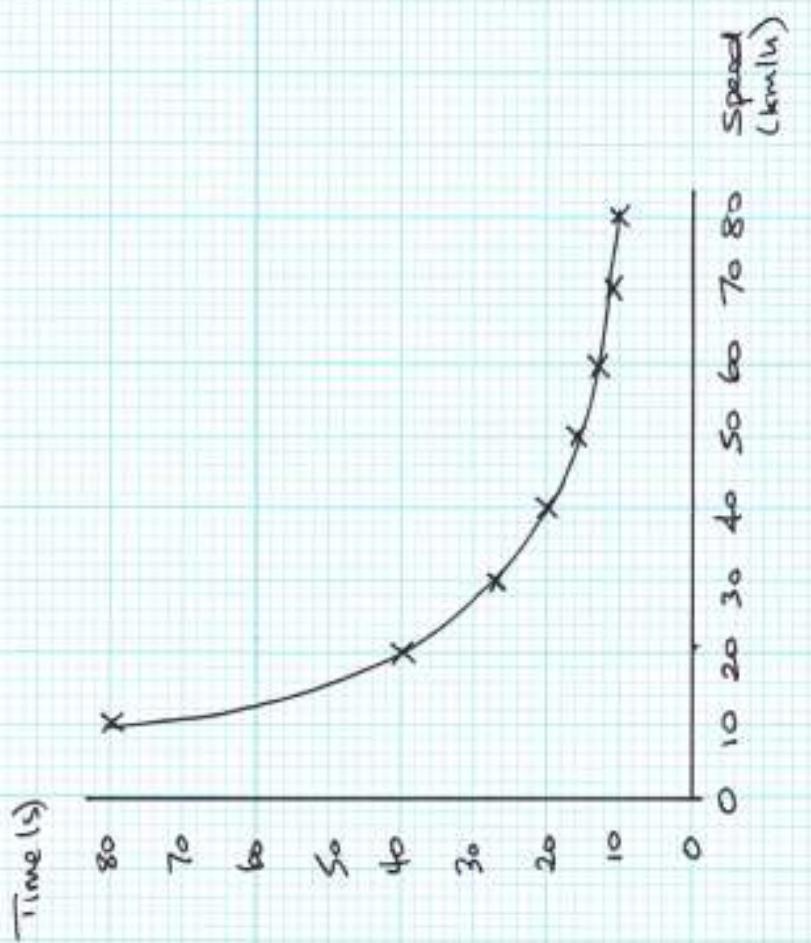
① Independent = mass  
Dependent = stretch

The greater the mass, the greater the stretch.



② Independent = speed  
Dependent = Time

The greater the speed, the less time it takes.





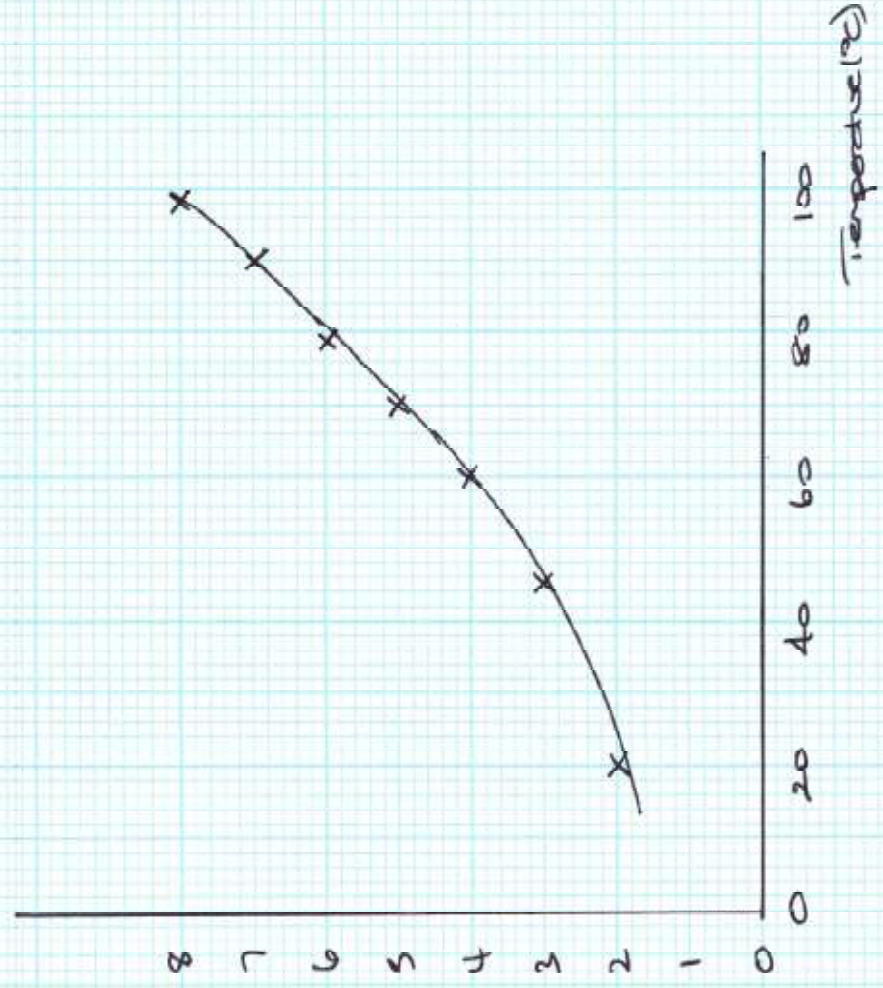
(could be done either way round)

③ Independent = temperature

Dependent = solubility of copper sulfate

The higher the temperature, the more copper sulfate dissolves.

mass of copper sulfate (g)



④ Independent = temperature

Dependent = speed of digestion

Up to about 40°C, the higher the temperature the greater the speed of digestion. After 40°C the speed falls and it stops altogether at about 60°C and above.

